

Impianto a vista

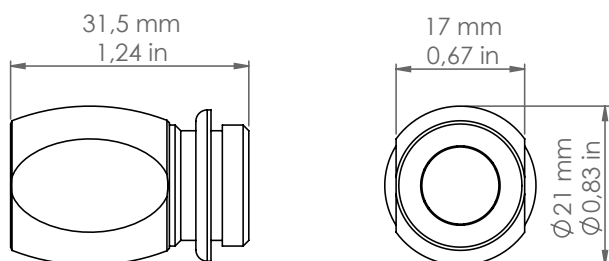
CIL.10



Descrizione: / Description:

Raccordo per connettere spot e canalina da Ø10 mm, in ottone anticato

/ Connection for spot with Ø10 mm, in aged brass finish.



CIL.10

DATI TECNICI: / / TECHNICAL DATA:

MATERIALE: / MATERIAL:	Ottone Brass
FINITURE: / FINISHES:	Ottone anticato Aged Brass
VOLUME [M³]:	0,0001
PESO LORDO [Kg]: / GROSS WEIGHT [Kg]:	0,09